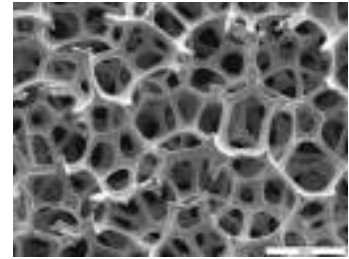


COPPER FOAM

PRODUCT DATA SHEET

Physical PROPERTIES (typical) *at 400g/m ² / 1.5mm / 90ppi	Currently realized on pilot-line
Porosity (ppi)	45 - 100
Area Weight (g/m ²)	150 - 600
Thickness (mm)	1.0-2.0
Width (mm)	150
Length (m)	100
Tensile (N/m)	1000
Elongation (%)	>4
Composition	Cu (99,95%)



Applications:

- **heat exchange**
- **water treatment**
- **EM shielding**
- **batteries**

CONTACT: www.efoam-lu.com

Product Development Engineer
Jérôme Petry
jerome.petry@circuitfoil.com
Phone: +352 - 95 75 51 814

c/o **Circuitfoil**
P.O. Box 9
Zone industrielle C Salzbaach
L-9501 Wiltz
Grand Duchy of LUXEMBOURG